



I-71/75 INTERCHANGE at
KY 338 – RICHWOOD ROAD

November 29, 2012

WELCOME

FORMAL PRESENTATIONS AT

5:15PM

and

6:00PM



“Switching Sides for Accelerated Rides”



PROJECT PURPOSE & NEED STATEMENT

The purpose of this project is to reconstruct the I-71/I-75 and KY 338 (Richwood Road) interchange to improve safety and reduce congestion and to develop and implement a comprehensive access management plan for KY 338 between Triple Crown Boulevard and US 25 (Dixie Highway).



“Switching Sides for Accelerated Rides”



**I-71/75 INTERCHANGE at
KY 338 – RICHWOOD ROAD**

November 29, 2012

PROJECT BACKGROUND



“Switching Sides for Accelerated Rides”



INTERCHANGE JUSTIFICATION STUDY

Federal Highway Administration (FHWA)

- In-depth Traffic Analysis
- Traffic
- Crashes – Critical Crash
Rate Factor 3.01

AVG. DAILY TRAFFIC	I-71/75	KY 338 East	KY 338 West
Current	87,000	14,800	19,800
Forecast Year 2030	123,300	21,600	31,300



“Switching Sides for Accelerated Rides”



INTERCHANGE JUSTIFICATION STUDY, Cont.

- 5 Alternatives Studied
- Double Crossover Diamond (DCD)



“Switching Sides for Accelerated Rides”



**I-71/75 INTERCHANGE at
KY 338 – RICHWOOD ROAD**

November 29, 2012

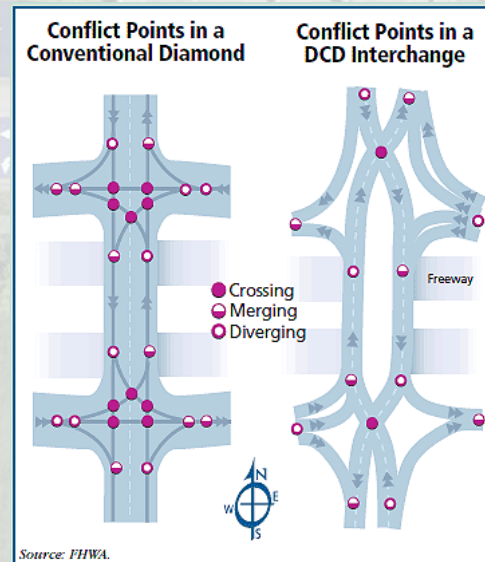
Double Crossover Diamond Interchange (DCD)



“Switching Sides for Accelerated Rides”

Benefits of Double Crossover Diamond Interchanges

- Cost
- Efficiency
- Safety



“Switching Sides for Accelerated Rides”



I-71/75 INTERCHANGE at KY 338 – RICHWOOD ROAD

November 29, 2012

CURRENT PROJECT

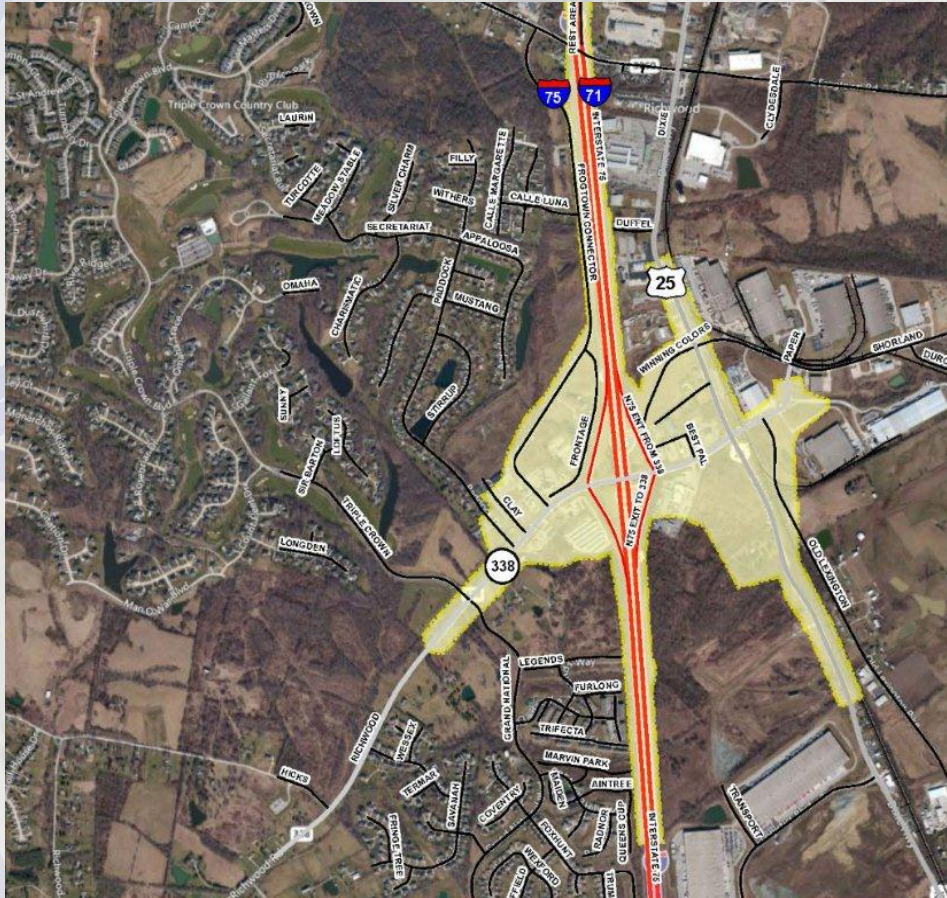


“Switching Sides for Accelerated Rides”



I-71/75 INTERCHANGE at KY 338 – RICHWOOD ROAD

November 29, 2012



PROJECT LIMITS



“Switching Sides for Accelerated Rides”



PROJECT STATUS

- **Presently in Phase 1 –
Develop and Evaluate Alternatives
Environmental Due Diligence – Categorical Exclusion 3**
- **Spring 2013 Phase 2 Design –
Preparation of Right-of-Way Plans and Construction Plans**





DESIGN CONSIDERATIONS

- **Reconstruction of Ramps**
- **I-71/75 Auxiliary Lanes**
- **East KY338**
 - Norfolk Southern Railroad**
 - Richwood Store (Historical Structure)**
 - Business Access**
- **West KY338**
 - Business Access**
- **Multi-use path / sidewalks**



“Switching Sides for Accelerated Rides”



PROJECT ALTERNATIVES

- E1/E3 (total 5 alternatives to the East)
- W7/W9 (total 9 alternatives to the West)
- Preferred Alternative
E1/W9





I-71/75 INTERCHANGE at KY 338 – RICHWOOD ROAD

November 29, 2012

PROJECT SCHEDULE

Public Meeting	November 29, 2012
Environmental Document Approved	1st Quarter 2013
Final Design	2013 - 2014
Right of Way Acquisition	2014 - 2016
Begin Construction	2016 or 2017



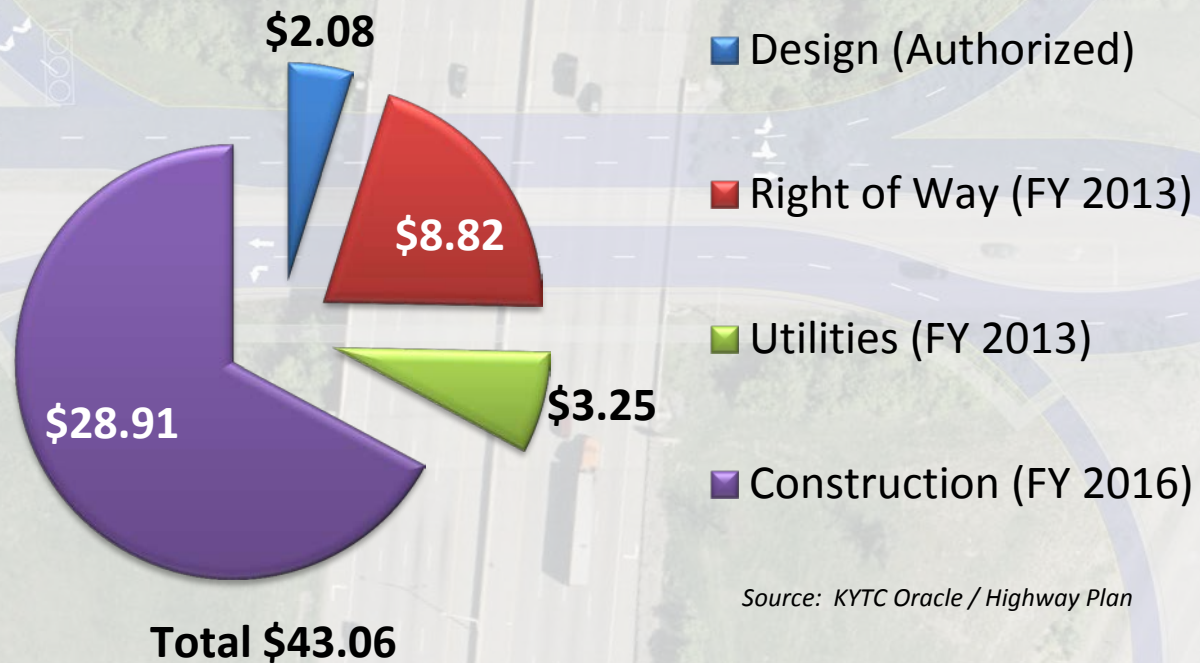
“Switching Sides for Accelerated Rides”



I-71/75 INTERCHANGE at KY 338 – RICHWOOD ROAD

November 29, 2012

PROJECT COST (millions)



Source: KYTC Oracle / Highway Plan



“Switching Sides for Accelerated Rides”



I-71/75 INTERCHANGE at
KY 338 – RICHWOOD ROAD

November 29, 2012

FEEDBACK

- Questionnaires by December 14, 2012
- Court Reporter Available Tonight
- www.75crossings.com

THANK YOU



“Switching Sides for Accelerated Rides”